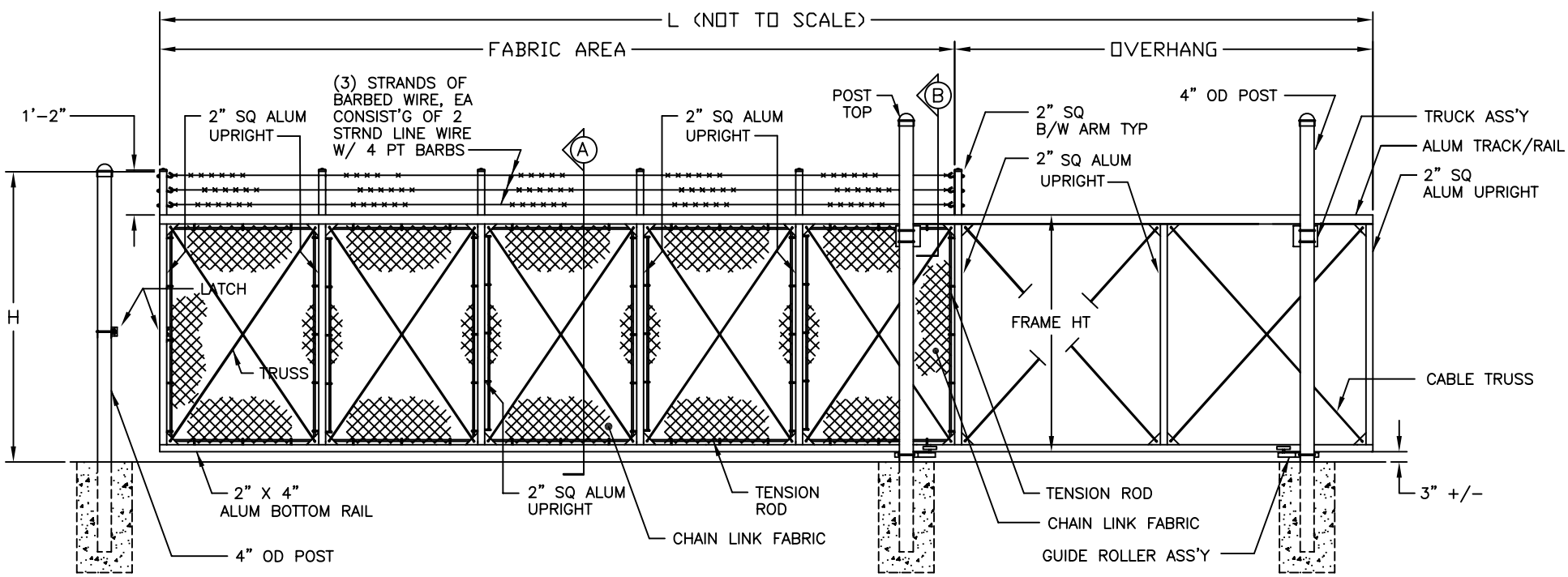


GATE PLAN



GATE ELEVATION - (5) BAYS SHOWN

SEE SHEET #2 FOR DIM'S, DETAILS & SECTIONS

NOTES:

1. FOOTING WIDTH TO BE (4)X POST WIDTH. MIN DEPTH TO BE 36".
2. GATES MAY BE MANUALLY OR ELECTRICALLY OPERATED. HARDWARE WILL VARY FOR ELECTRICALLY OPERATED GATES.
3. DWGS FOR DOUBLE OPENING GATES AVAILABLE ON REQUEST.

NOM HEIGHT (H)
7'-0" (6'+1')
8'-0" (7'+1')
9'-0" (8'+1')
OPENING
31'-0" THROUGH 50'-0"



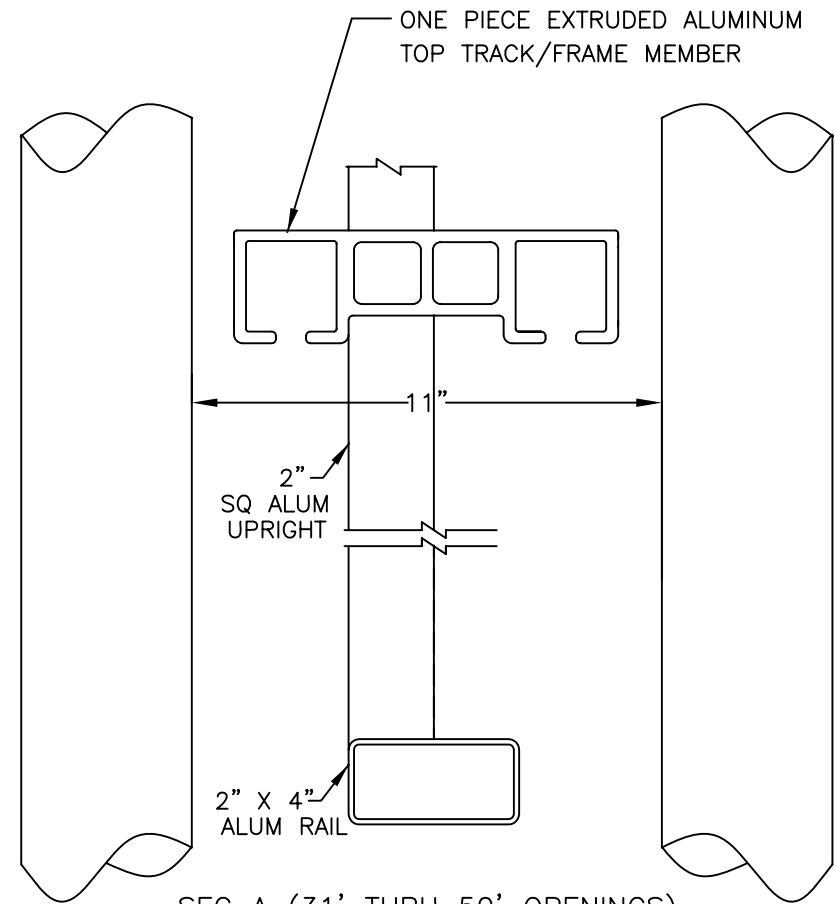
Quality Fence Builders, Inc.  
 (253) 939-8533  
 (253) 931-8604 FAX

DOUBLE TRACK CANTILEVERED SLIDING GATE

ROUND POSTS, W/ BARBED WIRE

DWG:	Q-FT-2	
BY:	TPA	1
DATE:	08-21-02	

OPENING	LENGTH (L)	GATE POSTS (G)	BAYS	OVERHANG
1/S POST FACE TO 1/S POST FACE	O/S DIM OF GATE LEAF	O/S POST FACE TO O/S POST FACE	NUMBER OF BAYS WITH CHAIN LINK	NUMBER OF BAYS WITHOUT CHAIN LINK
31'-0"	44'-0"	13'-0"	(5) FIVE	(2) TWO
32'-0"	45'-6"	13'-0"	(5) FIVE	(2) TWO
33'-0"	47'-0"	13'-6"	(5) FIVE	(2) TWO
34'-0"	48'-0"	14'-0"	(6) SIX	(2) TWO
35'-0"	49'-6"	14'-0"	(6) SIX	(2) TWO
36'-0"	51'-0"	15'-0"	(6) SIX	(3) THREE
37'-0"	52'-6"	15'-6"	(6) SIX	(3) THREE
38'-0"	54'-0"	15'-6"	(6) SIX	(3) THREE
39'-0"	55'-6"	16'-0"	(7) SEVEN	(3) THREE
40'-0"	56'-6"	16'-0"	(7) SEVEN	(3) THREE
41'-0"	58'-0"	16'-6"	(8) EIGHT	(3) THREE
42'-0"	59'-6"	17'-0"	(8) EIGHT	(3) THREE
43'-0"	60'-6"	17'-0"	(8) EIGHT	(3) THREE
44'-0"	62'-0"	17'-6"	(8) EIGHT	(3) THREE
45'-0"	63'-6"	18'-0"	(9) NINE	(4) FOUR
46'-0"	65'-0"	18'-6"	(9) NINE	(4) FOUR
47'-0"	66'-6"	19'-0"	(9) NINE	(4) FOUR
48'-0"	67'-6"	19'-0"	(9) NINE	(4) FOUR
49'-0"	69'-0"	19'-6"	(10) TEN	(4) FOUR
50'-0"	70'-6"	20'-0"	(10) TEN	(4) FOUR



SEE SHEET #1  
FOR ELEV & PLAN



Quality Fence Builders, Inc.  
(253) 939-8533  
(253) 931-8604 FAX

BACK-TO-BACK CANTILEVERED SLIDING GATE

ROUND POSTS, W/ BARBED WIRE

DWG: Q-FT-2.1  
BY: TPA  
DATE: 08-21-02