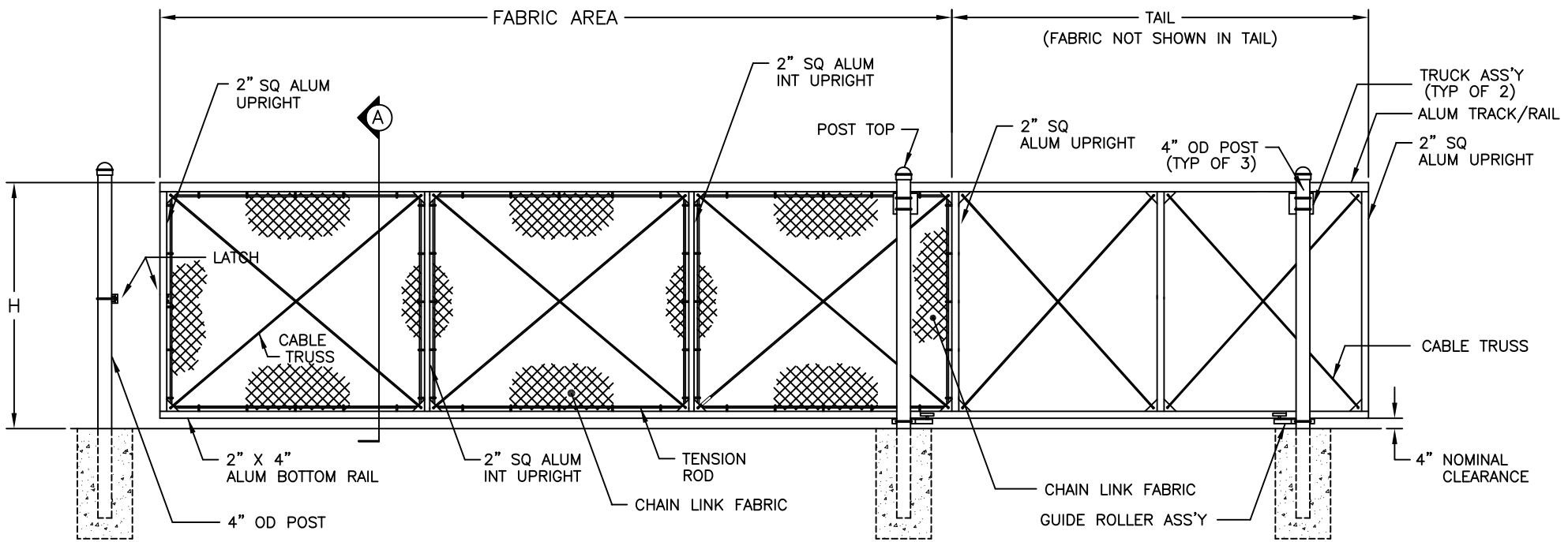


GATE PLAN



GATE ELEVATION - (3) BAYS SHOWN  
SEE SHEET #2 FOR SECTIONS & DETAILS

- NOTES:
1. FOOTING WIDTH TO BE (4)X POST WIDTH. MIN DEPTH TO BE 36".
  2. GATES MAY BE MANUALLY OR ELECTRICALLY OPERATED.

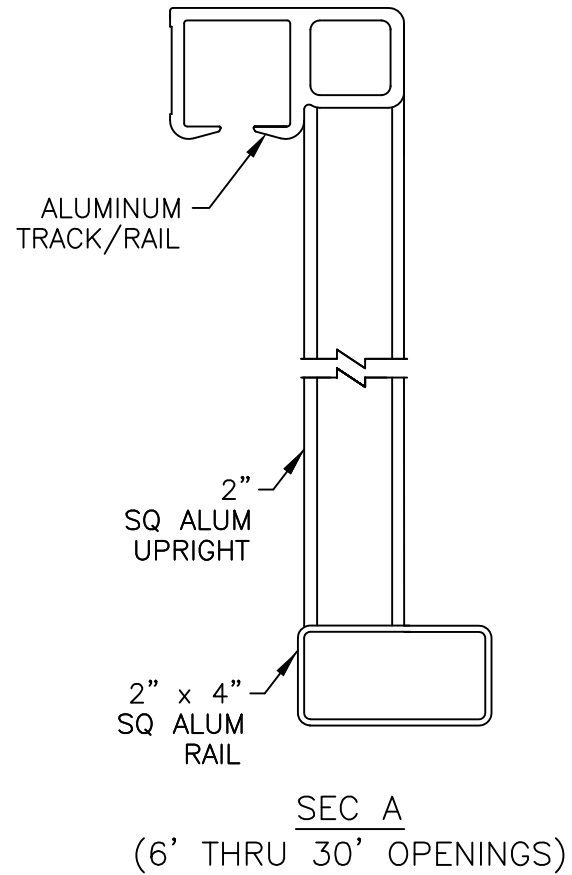
NOM HEIGHT (H)
6'-0"
7'-0"
8'-0"
10'-0"
12'-0"
OPENING
6'-0" THROUGH 30'-0"

MASTER HALCO, INC.  
PHONE 888-643-3623  
WWW.MASTERHALCO.COM

SUR-TRAC® CANTILEVERED SLIDING GATE  
ROUND POSTS, W/O BARBED WIRE

BY:	TPA	DWG:
DATE:	01-03-08	
REV BY:		LAYER: 1
REV DATE:		SCALE: NTS

OPENING	LENGTH (L)	GATE POSTS (G)
I/S POST FACE TO I/S POST FACE	O/S DIM OF GATE LEAF	O/S POST FACE TO O/S POST FACE
6'-0"	10'-6"	4'-0"
7'-0"	11'-6"	4'-0"
8'-0"	12'-6"	4'-0"
9'-0"	13'-6"	4'-0"
10'-0"	14'-6"	4'-0"
11'-0"	16'-0"	4'-6"
12'-0"	17'-6"	5'-0"
13'-0"	19'-0"	5'-6"
14'-0"	20'-6"	6'-0"
15'-0"	21'-6"	6'-0"
16'-0"	23'-0"	6'-6"
17'-0"	24'-6"	7'-0"
18'-0"	26'-0"	7'-6"
19'-0"	27'-6"	8'-0"
20'-0"	28'-6"	8'-0"
21'-0"	30'-0"	8'-6"
22'-0"	31'-6"	9'-0"
23'-0"	33'-0"	9'-6"
24'-0"	34'-6"	10'-0"
25'-0"	35'-6"	10'-0"
26'-0"	37'-0"	10'-6"
27'-0"	38'-6"	11'-0"
28'-0"	40'-0"	11'-6"
29'-0"	41'-6"	12'-0"
30'-0"	42'-6"	12'-0"



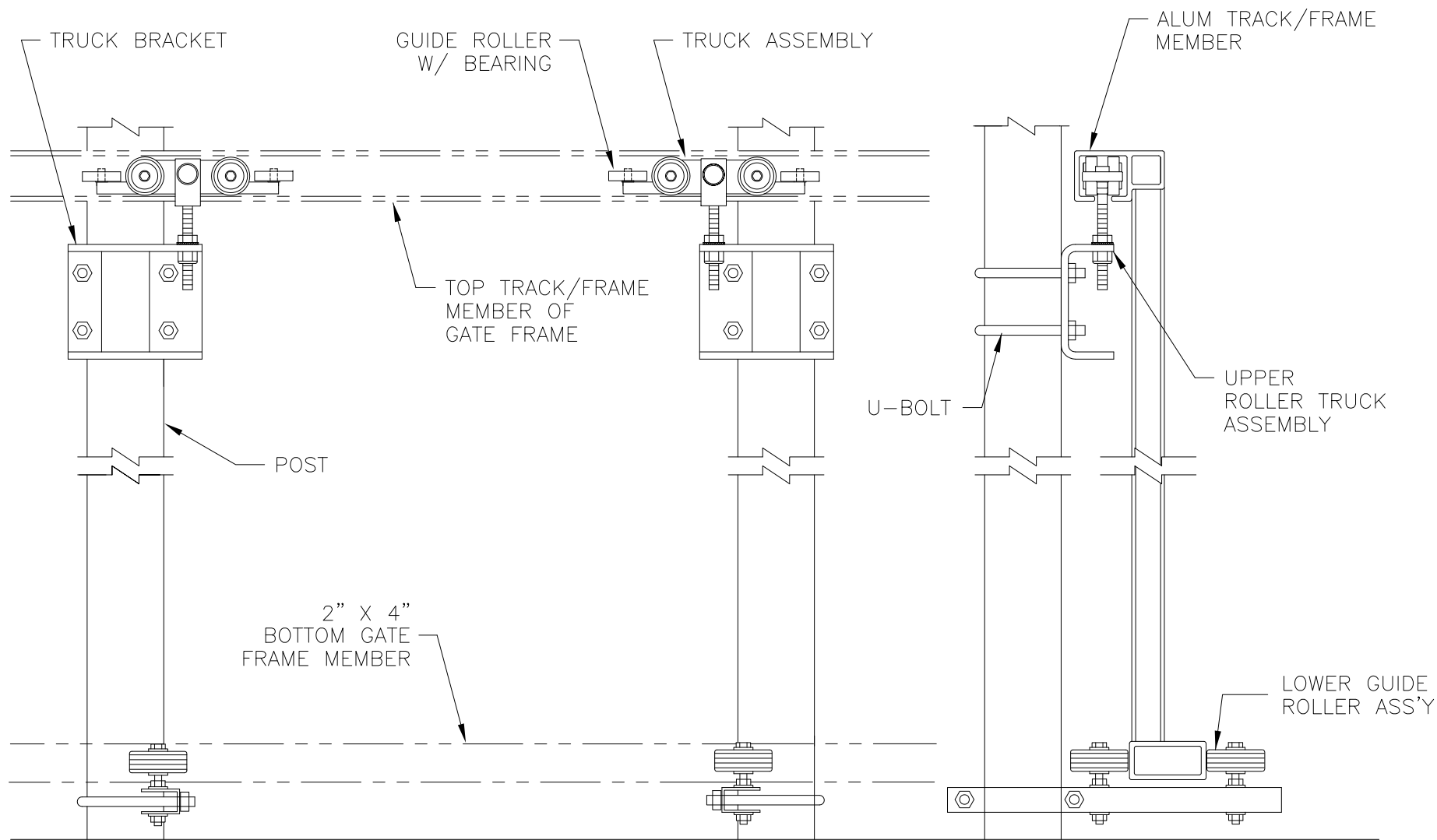
SEE SHEET #1  
FOR ELEV & PLAN



MASTER HALCO, INC.  
PHONE 888-643-3623  
WWW.MASTERHALCO.COM

SUR-TRAC® CANTILEVERED SLIDING GATE  
SIZING CHART

BY:	CAN	DWG:
DATE:	10-22-13	
REV BY:		LAYER: 1
REV DATE:		SCALE: NTS



ELEVATION

END VIEW

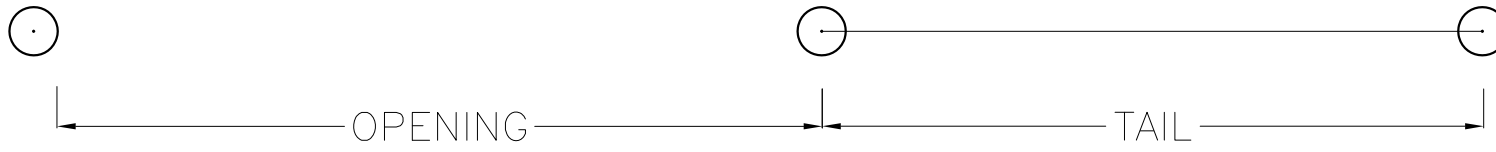
NOTE: TRUCK BRACKET AND BOTTOM GUIDE ROLLER ASS'Y CAN ALSO BE BOLTED TO A SOLID GROUTED CMU WALL.



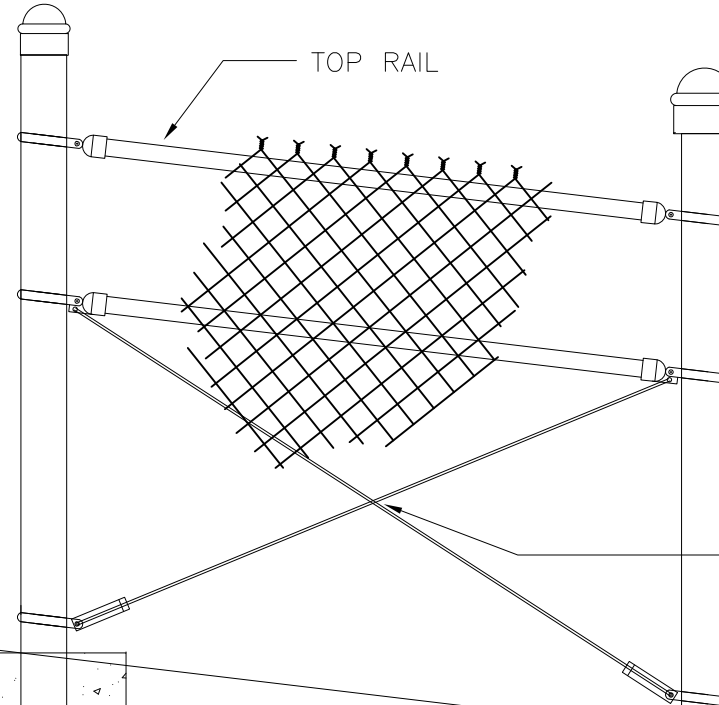
**MASTER HALCO, INC.**  
 PHONE 888-643-3623  
 WWW.MASTERHALCO.COM

**SUR-TRAC® CANTILEVERED SLIDING GATE  
 TRUCK AND ROLLER DETAILS**

BY:	TPA	DWG:
DATE:	01-03-08	
REV BY:		LAYER: 1
REV DATE:		SCALE: NTS



NOTE.  
ALL POSTS ARE TO BE PLUM AND  
LEVEL AT TOP.



TRUSS

